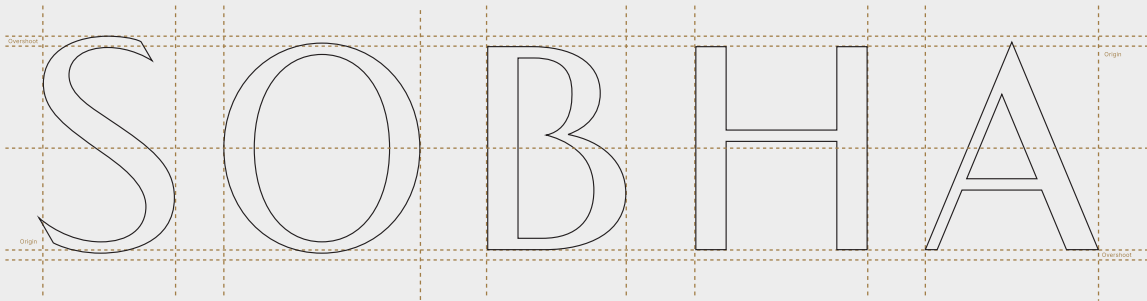


Estd.
**19
95**



Passion. Inked with Perfection.

SOBHA has crafted over 548 iconic projects in residential, commercial and contractual spaces spread over 136.68 million sq. ft. (12.69 million sq. m.) by paying minute attention to detail – in systems, processes, and design. With a steadfast approach to deliver impeccable quality, SOBHA performs 1,456 quality checks before handover.

- 29 Years of Passion at Work
- Over 230 Prestigious Awards
- Strong Workforce 14,000+ Employees
- National Footprint 27 Cities in 14 States

SOBHA's Portfolio of Excellence.



SOBHA Lake Edge, Thrissur

RESIDENTIAL

SOBHA believes in setting new benchmarks in quality. From presidential apartments, villas, row houses, and luxury apartments, to plotted developments, every SOBHA product is built to last for generations.

Spread across 77.10 million sq. ft.
(7.16 million sq. m.)



Infosys Global Education Center, Mysuru

CONTRACTING

The contracts business at SOBHA showcases an expansive portfolio across India. Our turnkey projects include some of the global corporate giants – Taj, ITC, Bosch, Biocon, Timken, and Dell to name a few.

Spread across 59.15 million sq. ft.
(5.49 million sq. m.)



1 SOBHA Mall, Bengaluru

COMMERCIAL

SOBHA forayed into the commercial space with SOBHA City Mall, in Thrissur. SOBHA's latest venture is 1 SOBHA Mall, an entertainment and shopping centre on St. Mark's Road, Bengaluru.

Spread across 400,000 sq. ft.
(0.04 million sq. m.)

Pioneering Self-reliance.

SOBHA introduced the concept of backward integration in the real estate industry, bringing the finest together – from precision engineering to innovative design, and from superior concrete products, glazing & metal works to top-notch interiors. This philosophy allows SOBHA to provide unmatched quality to its customers. This has been captured as a case study featured in Harvard Business Review.

MANUFACTURING VERTICALS



Concrete Products Division
55,000 sq. ft. (5,109.66 sq. m.)



Interiors Division
3,75,000 sq. ft. (34,838.64 sq. m.)



Glazing & Metal Works Division
1,00,000 sq. ft. (9,290.30 sq. m.)



Precast Facility
73,000 sq. ft. (6,781.92 sq. m.)

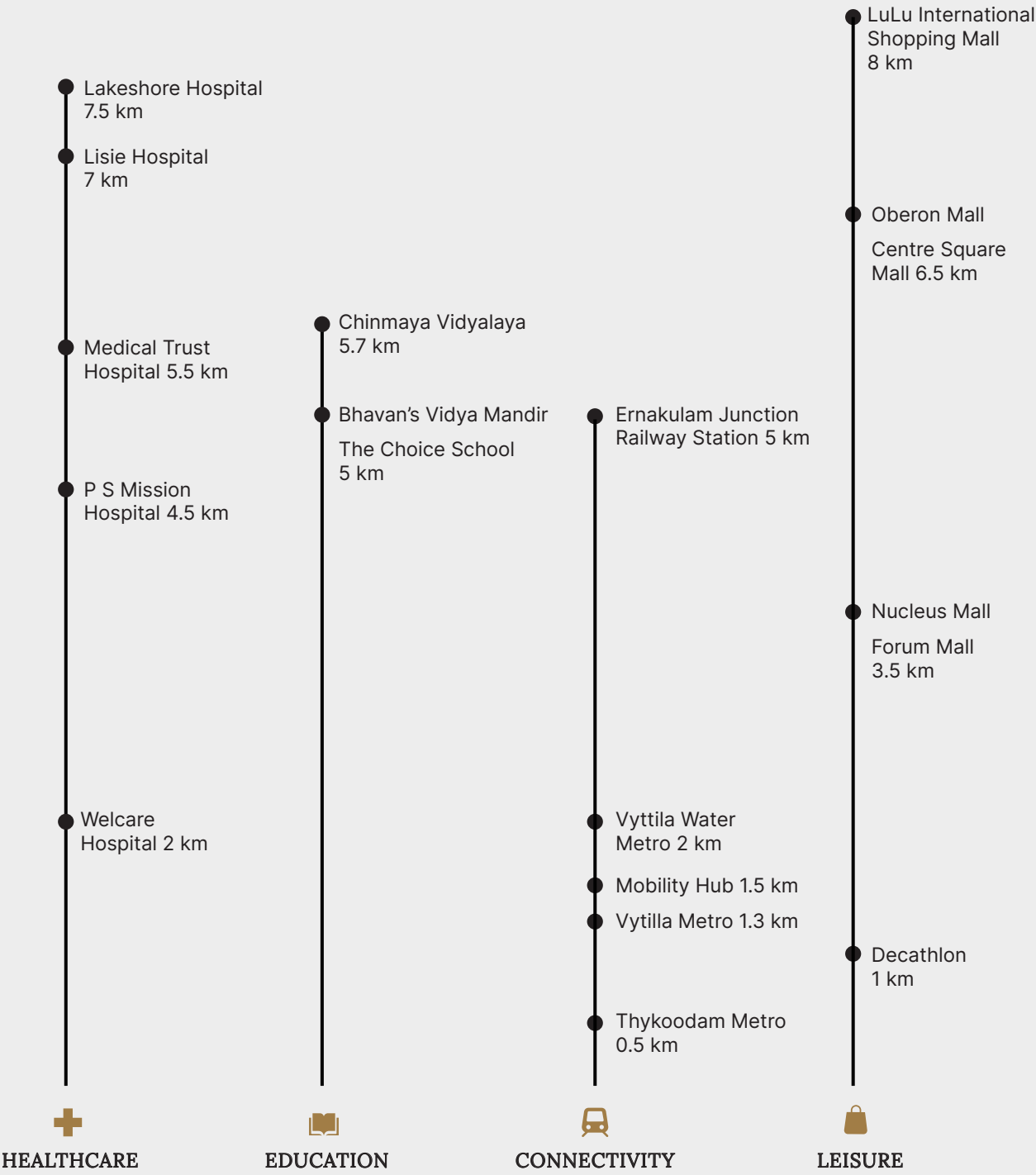
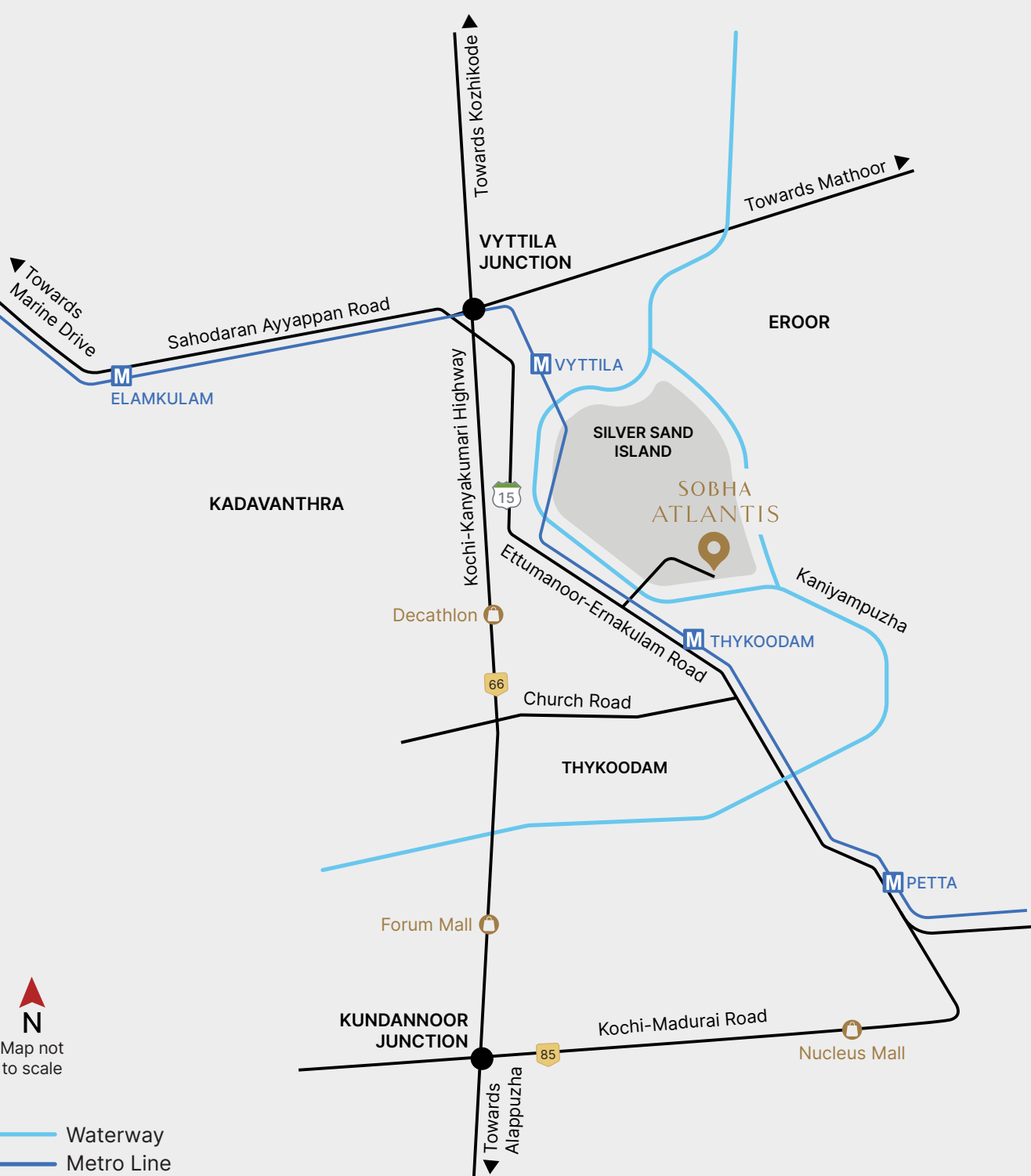
The Alluring Call of Your Homeland.

From the lush greenery of the Western Ghats to the serene backwaters that weave through the state, every corner of Kerala exudes a sense of tranquillity that is unrivalled. Kochi, with its ineffable allure, promises a luxurious escape. Nestled along the tranquil shores of the Arabian Sea, this coastal gem beckons you with its rich blend of history and modern luxuries.



Neighbourhood of Conveniences.

Living in a well-connected environment on Kochi's Silver Sand Island near Vytilla Mobility Hub is the epitome of convenience. With essential infrastructure such as Infopark, educational institutions, medical facilities, and entertainment avenues just a short drive away, the comfort here is truly unmatched.



An Ode to the World Citizen.

The art of luxurious living lies in striking a harmonious balance between sophistication and comfort, all while remaining connected to the familiarity of home.

In a world where native trailblazers have left their mark in 182 out of 195 countries, one understands the allure of the finer things in life. And what could be more exquisite than indulging in those luxuries within the loving embrace of your homeland?





The Best of an International Lifestyle.

Premium towers nestled along the banks of the serene Chilavanoor Kayal. From breathtaking views of the emerald waters to bespoke amenities curated for the most discerning residents, SOBHA Atlantis offers a 4.69-acre sanctuary for those seeking an island retreat. Crafted in perfect harmony with the golden ratio, the majestic golden frame adorning the entrance mirrors the iconic Frame of Dubai.

Step into a world of international craftsmanship equipped with unmatched amenities and security systems that are at par with the global standards. Here is an abode fit for those with a taste for only the finest.

Designed to Stand Out.

A GLOBAL STUDIO

SOBHA Atlantis is imagined and crafted by an international team of passionate architects and designers hailing from India, Europe and the Far East. The studio has been created with the goal of leveraging the power of design with functional, aesthetic, and sustainable projects. The state-of-the-art design studio, with over 200 professionals, has crafted over 136.68 million sq. ft.

A CREATION PAR EXCELLENCE

SOBHA Atlantis is the culmination of design excellence and German engineering innovation, with a strong influence of contemporary design. The grand façade is crafted with sleek lines and dazzling glass panels, that are sure to reflect the gleaming rays of the sun.



SOBHA Global Studio Team

From Left to Right:
Mr. Enrique Charco, Interior Designer, Mr. Nikita Bazhenov, Interior Designer,
Ms. Vinita Agast, Architect and Mr. Jeffrey Anthony Diaz Magsuci, Landscape Designer.

Masterfully Crafted.

- Residences enveloped by 70% open space and complemented by world-class amenities.
- A clubhouse - the Island Club - spans 16,000 sq. ft. and is equipped with an infinity pool and a variety of amenities.
- Integrating tropical landscaping with exotic flora and water features, the project has an oasis-like aesthetics and microclimate.
- The crystal-clear waters surrounding the project guide usher the breeze into homes, enhancing cross-ventilation.
- Inspired by Atlantis Dubai, the elevation features layered balconies and terraces to create a visually dynamic structure.

AREA SPECIFICATIONS

3 BHK: 1852 – 2695 sq. ft.
4 BHK: 3108 sq. ft.

KEY FEATURES

Total Land Area: 4.69 acres
Total Units: 384
No. of Blocks: 4
No. of Floors: G+3S+24

AMENITIES

- | | |
|--------------------------|---------------------|
| 01 Entrance Plaza | 09 Island Club |
| 02 Entrance Arch | 10 Kids' Play Area |
| 03 Visitors' Car Parking | 11 Podium |
| 04 Courtyards | 12 Multisport Court |
| 05 Beach Pool | 13 Botanical Garden |
| 06 Beach Deck | 14 Palm Grove Plaza |
| 07 Infinity Pool | 15 Nature Trail |
| 08 Beach Volleyball | 16 Lakefront Plaza |



Refined Taste,
International Repute.

Lavish Comforts,
Serene Life.



Living Room

From hosting glamorous gatherings to cherishing precious moments with loved ones, the living room is meticulously designed to bear witness to your life's grandeur. With abundant ventilation and awe-inspiring views, this space is truly a class apart.



Master Bedroom

Imagine waking up in a bedroom fit for royalty, where every detail exudes extravagance. This is where one wakes up and retires for the evening, and hence holds a paramount significance in one's life.

Bring the
Outdoors in.



Balcony

Seasoned
with Detailing.



Kitchen

A coveted retreat, this spacious balcony is ideal for exclusive gatherings, romantic evenings under the stars, or simply a serene spot to enjoy a cup of coffee. Here's to enjoying the finest things in life.

A functional kitchen is the beating heart of any lavish home. It serves as a culinary sanctuary where exquisite meals are crafted and shared among loved ones and cherished guests.

Daily Ritual
of Bliss.



Bathroom

A luxurious shower experience that envelops you in a cascade of relaxation. The meticulously designed bathroom elevates your daily routine to an escape that will leave you feeling revitalised.

A Space
that Embodies You.



Multi-utility Room

A place to indulge in art, music, yoga, or any other pursuit. This room has been designed to accommodate a variety of your interests. Go on, transform this space to a reflection of your multifaceted passions.

Curated for the Global Urbanite.

Step into the lavish clubhouse equipped with an array of exquisite amenities that cater to your every desire. As you explore further, you'll discover the state-of-the-art fitness centre. Whether you seek a quiet retreat or a social gathering, this clubhouse envelops you in a world of upscale comfort.

Island Club



Haven of Boundless Leisure.

The magnificent infinity pool that seemingly merges with the horizon beckons one and all. Whether you opt for a leisurely swim or revel in the sun-drenched atmosphere with a cool beverage in hand, here is a sumptuous retreat from the outside world.

Infinity Pool



Repose,
Retreat.

Stillness,
Silence.



Palm Grove Plaza

The whispering fronds above create a soothing melody, while the gentle rustle of leaves brings a sense of calm to the soul. As sunlight filters through this canopy, casting dappled patterns on the soft ground below, one can't help but be enveloped in a cocoon of serenity.



Lakefront Plaza

Spend time at the garden with the waterfront and let the cool breeze whisper stories of the distant lands. Sit in the lap of nature and lose yourself to the sounds of the gentle breeze whizzing past you, bringing the melodies of the birds and harmonising with the gentle waves.

Shore of
Good Times.

It's All
Child's Play.



Beach Volleyball Court



Kids' Pool

Imagine yourself in a world of refinement, where every court is a stage for athletic prowess and grace. The volleyball court, with its pristine white sand and net gently swaying in the breeze, exudes an air of laid-back sophistication.

Allow your little ones to engage in activities that fuel their creativity, ignite their imagination, and improve their social skills. This play area will enable them to develop essential skills such as problem-solving, teamwork, and emotional intelligence in a safe and stimulating environment.

Ultra Luxe Abodes for the World Citizen.

As you navigate the whirlwind of exploration, you've come to appreciate the true essence of a quality life. Whether you are embarking on thrilling adventures abroad or seeking the serenity of Kerala, you have a discerning taste for luxury. Give yourself the ultimate gift of an address that speaks the language of true refinement.



Testimonials



Mr. Faizal & Family
Marina One
Kochi

The main reason we were drawn to Marina One was SOBHA's reputation for quality, the location of the property, and the attractiveness of the future community. Kudos to the team for making our buying experience truly memorable.



Mr. Pulkit & Family
SOBHA Royal Pavilion
Bengaluru

We are from Rajasthan and we loved the Rajasthan theme of SOBHA Royal Pavilion. What caught our attention, apart from the theme, is the construction quality of SOBHA, the layout planning, and all the unique amenities, especially the clubhouse.



Mr. Joby & Family,
SOBHA Atlantis
Kochi

The team at SOBHA is so transparent and efficient that I booked my home at SOBHA Atlantis even without a site visit! Although my entire communication was over the phone, the process felt hassle-free.



Mr. Naresh & Family
SOBHA City,
Gurugram

We were looking for a community where our kids have open space to play safely! This project has amenities for both kids and adults. It has a wide range of sporting amenities - from cricket ground to skating rink.



Mr. Manot & Family
SOBHA Waterfront
Hyderabad

We were always aware of SOBHA quality, as my uncle had invested in multiple properties of SOBHA in Bengaluru. The salesperson dealt with all our queries very meticulously & patiently, and brought in a lot of transparency.



Mr. Patel & Family
SOBHA Dream Heights
GIFT City, Gujarat

We finalised our dream home with SOBHA, after detailed research of various other projects at GIFT City. Being from real estate background, I've never seen anything like the SOBHA Experience Center. We are proud to be a part of SOBHA family.

